

Functional & Quiet

## Parallel Shaft Gears TDF-Series

**Cost-efficient with a high service life.**

The **optimized contact-ratio helical gear technology** results in maximum efficiency and optimally smooth running. With **aluminum die casting technology** a customer-oriented solution with an outstanding price-to-performance ratio can be developed.

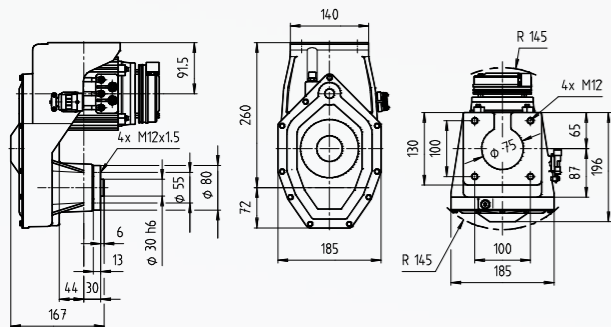
The design and the aluminum alloy specially selected for this application combine light weight and rigidity, particularly with wheel sizes of 200 mm and 230 mm.

- Low energy consumption due to high efficiency
- Sustainable by energy recuperation
- Robust and durable
- Compact, light and quiet

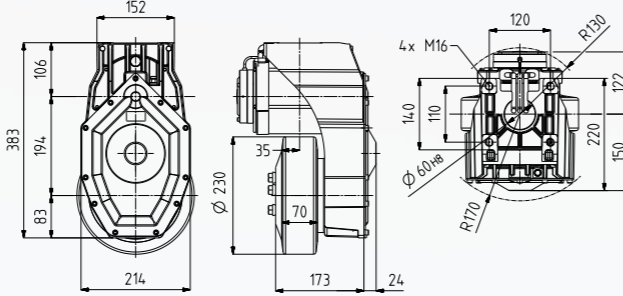
## TDF200 & TDF230

Traction drive helical gearbox with aluminum die cast housing and integrated AC induction motor.  
Holding brake and speed sensor. Battery voltage 24 Volt, motor power up to 2.0 kW.

TDF200

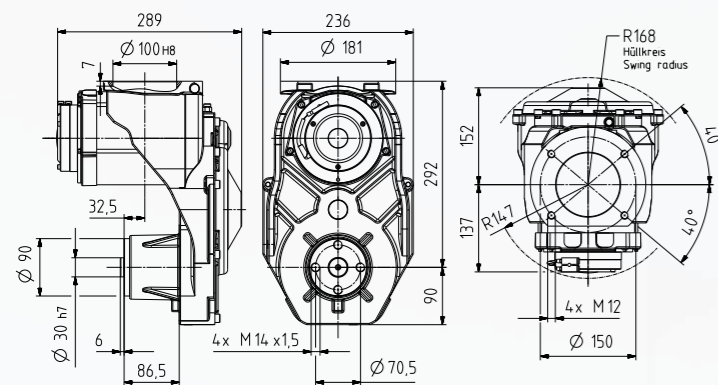


TDF230



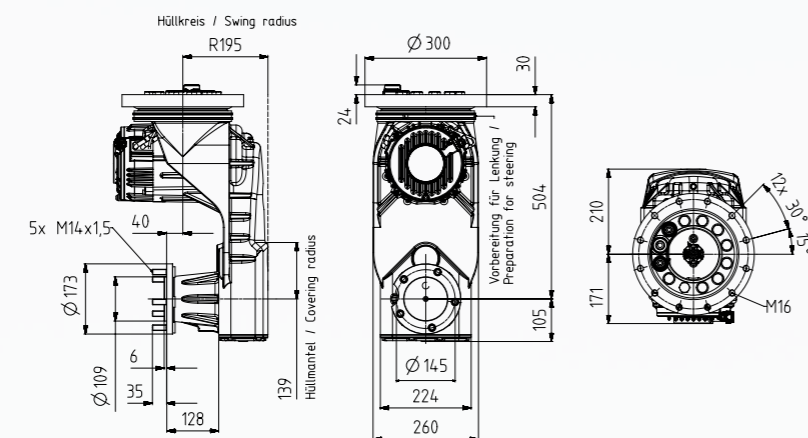
## TDF254

Traction drive helical gearbox with ductile cast iron and integrated AC induction motor.  
Holding brake and speed sensor. Battery voltage 24 Volt, motor power up to 2.0 kW.

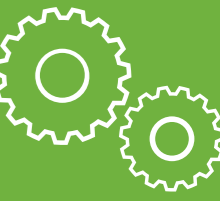


## TDF471

Traction drive helical gearbox with ductile cast iron and integrated AC induction motor.  
Holding brake and speed sensor. Battery voltage 24 Volt, motor power up to 4.9 kW.



## Parallel Shaft Gears TDF-Series



### Benefits

- Complete motor-brake-gearbox-unit
- Low energy consumption due to high efficiency
- Sustainable by energy recuperation
- Optimized contact-ratio helical gear technology results in smooth running
- Application specific motor sizing
- Motor speed recording
- Compact design
- Robust and durable
- Electromechanical holding brake for parking and emergency stopping

### Options

- Various motor outputs are available
- Mounting of customer supplied motors is possible
- Various wheels can be mounted (sizes / profiles)
- Traction motors for battery voltages from 24 to 48 V

### Application Examples

- Pallet jacks
- Automated guided vehicles
- Three-wheel sit down forklift trucks
- Sweeper / Scrubbers
- Aerial work platforms
- Counterbalanced truck (TDF471)



Pallet jacks

### Technical Data

Parallel Shaft Gear	TDF200L	TDF230	TDF254	TDF471
<b>Gearbox Data</b>				
Static Wheel Load	7,750 N	10,000 N	11,000 N	17,000 N
Gear Reduction Ratios	27	18.2 – 30.1	29.7	31.3
Max. wheel torque (static)	435 Nm	660 Nm	690 Nm	526 Nm
Wheel Diameter Ø x Wheel Width	200 x 70 mm	230 x 70 mm	254 x 100 mm	457 x 153 mm (180/70-8) up to Ø 471 mm
<b>Motor Data</b>				
Output (S2-60 min)	1.2 kW	1.2 – 2.0 kW	2.0 kW	4.9 kW
Rated voltage	AC 3x15 Volt Delta Connection (24 Volt battery) AC 3x22 Delta Connection (36 Volt battery) AC 3x28 Delta Connection (48 Volt battery)			
Max. Amperage	max. 210 A		210 A	440 A
<b>Brake Data</b>				
Voltage	DC 24 V			
Torque	11 Nm	11 – 20 Nm	20 Nm	-



## Dynamics for every Application - and Task

# We drive the World

A dense network of international subsidiaries and sales offices in all major industrial countries ensure close contact with our customers around the world – and guarantee an excellent standard of service.

**Kindly contact us for further detailed information.**



**ABM Greiffenberger Antriebstechnik GmbH**  
P.O. Box 140, 95614 Marktredwitz / Germany  
Phone: +49 9231 67-0  
info@abm-drives.com | abm-drives.com

Follow us on [LinkedIn](#)